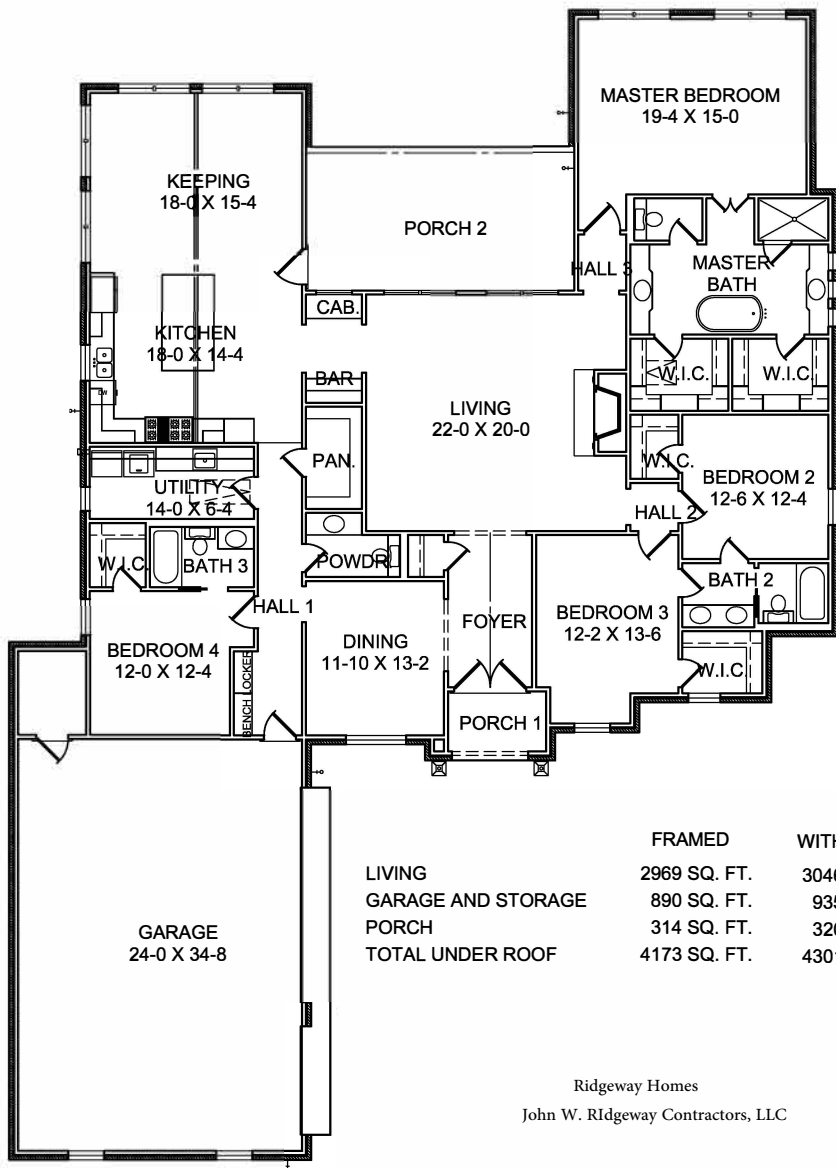


	FRAMED	WITH BRICK
LOWER LIVING	2101 SQ. FT.	2179 SQ. FT.
UPPER LIVING	816 SQ. FT.	816 SQ. FT.
TOTAL LIVING	2917 SQ. FT.	2995 SQ. FT.
GARAGE AND STORAGE	860 SQ. FT.	899 SQ. FT.
PORCH	323 SQ. FT.	299 SQ. FT.
TOTAL UNDER ROOF	4100 SQ. FT.	4193 SQ. FT.

Ridgeway Homes
 John W. Ridgeway Contractors, LLC

PLAN NO. 2990




RIDGEWAY Homes
 Builders of the American Dream

PLAN NO. 2989

WIDTH: 69'-0"
 DEPTH: 95'-10"

	FRAMED	WITH BRICK
LIVING	2969 SQ. FT.	3046 SQ. FT.
GARAGE AND STORAGE	890 SQ. FT.	935 SQ. FT.
PORCH	314 SQ. FT.	320 SQ. FT.
TOTAL UNDER ROOF	4173 SQ. FT.	4301 SQ. FT.

Ridgeway Homes
 John W. Ridgeway Contractors, LLC